

# PITLESS ADAPTERS PARTS

## SPECIFICATIONS:

- The pitless adapter parts include a male part, male part O-ring, female part, female part O-ring, gasket, collar, and nut.
- The male part of the adapter is rounded at the bottom for the easiest installation.
- Quality gaskets and an O-ring are securely glued in place to ensure a proper seal around both the discharge and casing.
- An extra thick wall on the discharge through the casing helps support weight and adds to the safety factor.

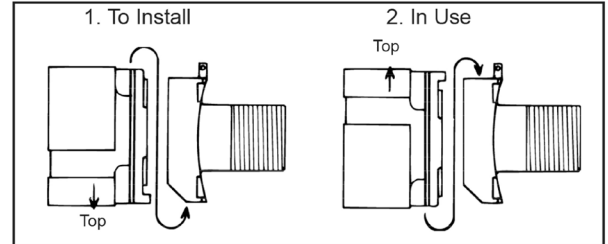


No Lead



ASSE Standard #1093-2019(R 2023)  
WSC Standard PAS-97(2019)(R 2023)

## Built-In Installation Tool



## RATINGS:

- Max Pressure: 150 PSI
- Max Temperature: 180°F

## CERTIFICATIONS:

- PAS-1 and PAS-97(2019)(R 2023)
- ASSE Standard #1093-2019(R 2023)

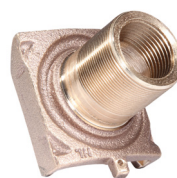
DIMENSIONS		
Model No.	Part No.	Approx. Wt./Lbs.
<b>Male Part – No-Lead Brass</b>		
MBNL50	MBMNL50	0.90
MBNL200	MBMNL20	1.20
MBNL225	MBMNL22	1.40
<b>Male Part – No-Lead Bronze</b>		
MBNL60	MBMNL60	1.25
MBNL100	MBMNL10	1.13
MBNL125	MBMNL12	1.80
MBNL300	MBMNL30	5.50
MBNL400	MHMNL40	3.70
<b>Male Part O-Ring</b>		
MBNL50	OR222	0.01
MBNL60	OR222	0.01
MBNL100	OR326	0.01
MBNL125	OR326	0.01
MBNL200	OR326	0.01
MBNL225	OR326	0.01
MBNL300	OR332	0.13
MBNL400	OR326	0.01
<b>Female Part – No-Lead Brass</b>		
MBNL50	MBFNL50	1.30
MBNL200	MBFNL20	1.50
MBNL225	MBFNL22	2.30

DIMENSIONS		
Model No.	Part No.	Approx. Wt./Lbs.
<b>Female Part – No-Lead Bronze</b>		
MBNL60	MBFNL50	1.25
MBNL100	MBFNL10	0.87
MBNL125	MBFNL12	1.80
MBNL300	MBFNL30	8.70
MBNL400	MHFNL40	4.70
<b>Female Part O-Ring</b>		
MBNL50	MBFG10	0.10
MBNL60	MBFG10	0.10
MBNL100	MBFR20	0.03
MBNL125	MBFR12	0.03
MBNL200	MBFR12	0.03
MBNL225	MBFR12	0.03
MBNL250	MBFR12	0.03
MBNL300	MBG30	—
MBNL400	MBFG12	0.10
	MBFG10	0.10

DIMENSIONS		
Model No.	Part No.	Approx. Wt./Lbs.
<b>Gasket</b>		
MBNL60	MBG20	0.05
MBNL100	MBG20	0.05
MBNL125	MBG12	0.05
MBNL250	MBG12	0.05
<b>Collar</b>		
MBNL60	MBC60	0.25
MBNL100	MBC10	0.38
MBNL125	MBC125R	0.25
<b>Nut</b>		
MBNL60	MBN60	0.25
MBNL100	MBN10	0.25
MBNL125	MBN125	0.25



Male Part



Female Part



Nut