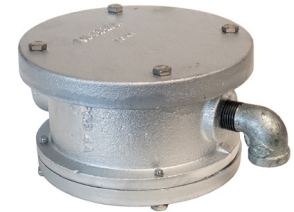


WC SERIES – SANITARY (WATERTIGHT) CAPS

SPECIFICATIONS:

- All caps certified watertight - Pitless Adapter Standard PAS-2, PAS-97(2019) (R 2023), ASSE Standard #1093-2019(R 2023) and Illinois Code.
- The watertight well cap provides protection to the exposed portion of the well casing by being tamper-resistant, forming a protective cover from the elements, and being resistant to the entry of vermin or contaminants.
- Designed for use with all pitless units and adapters.
- Made from painted cast iron, for long-lasting performance.
- Features two neoprene O-rings to maintain a secure, watertight seal.
- Stainless steel bolts provide a secure, corrosion-free connection.
- Includes a galvanized vent ell with a stainless steel screen to allow ventilation while keeping the cap watertight.
- Each cap is individually boxed.



CERTIFICATIONS:

- PAS-2 and PAS-97(2019)(R 2023)
- ASSE Standard #1093-2019(R 2023)
- Illinois Code

MATERIALS LIST	
Part Name	Material
Cap Cover	Painted Cast Iron
Cap Bolts (4)	Stainless Steel
Cap O-Ring	Neoprene
Adapter Head Casting	Painted Cast Iron
Vent Ell	Galvanized
Screened Air Vent	Stainless Steel
Head O-Ring	Neoprene
Clamping Ring	Painted Cast Iron
Head Ring Bolts (4)	Stainless Steel

DIMENSIONS					
Part No.	Casing I.D. Size	Casing O.D. Size	Conduit Tap Size	Vent Size	Approx. Wt./Lbs.
WC300	3"	4-1/2"	1"	1/2"	7.3
WC400	4"	4-1/2"	1"	1/2"	9.5
WC500	5"	5-9/16"	1"	3/4"	11.7
WC600	6"	6-5/8"	1-1/4"	3/4"	13.8
WC800	8"	8-5/8"	1-1/2"	1"	29.7