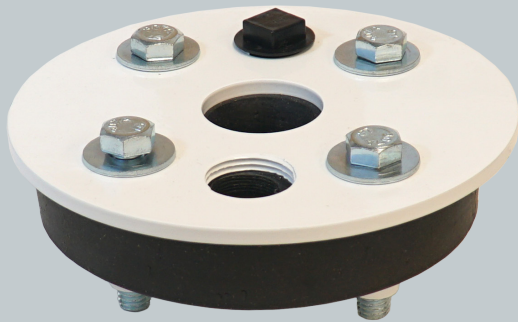


WELL SEALS

CAST IRON, STEEL, PLASTIC



LEARN MORE ABOUT THE BEST IN THE INDUSTRY AT merrillmfg.com

WS-SERIES CAST IRON AND STEEL WELL SEALS

Single Drop Pipe - Split Top Plate

- 3/4" Thick Rubber Packer - Painted Cast Iron - Individually Boxed and Labeled

Order Number	UPC Bar Code (Qty.1)	Well Size I.D.	Drop Pipe	Cable Tapping	Vent Tapping	Approx. Weight
WS400100	6 42367 02929 6	4"	1"	1"	1/2"	2.8 lbs.
WS400125	6 42367 02931 9	4"	1-1/4"	1"	1/2"	2.6 lbs.
WS400150	6 42367 02986 9	4"	1-1/2"	3/4"	1/4"	3.2 lbs.
WS400200	6 42367 02987 6	4"	2"	1/2"	1/4"	2.6 lbs.
WS40010075	6 42367 12438 0	4"	1"	3/4"	1/2"	2.8 lbs.
WS40012575	6 42367 12439 7	4"	1-1/4"	3/4"	1/2"	3.3 lbs.
WS500100	6 42367 02994 4	5"	1"	1"	1/2"	4.7 lbs.
WS500125	6 42367 02996 8	5"	1-1/4"	1"	1/2"	4.6 lbs.
WS500150	6 42367 02998 2	5"	1-1/2"	1"	1/2"	4.4 lbs.
WS500200	6 42367 03000 1	5"	2"	1"	1/2"	4.1 lbs.
WS558100	6 42367 03003 2	5-5/8"	1"	3/4"	1/2"	7.5 lbs.
WS558125	6 42367 03004 9	5-5/8"	1-1/4"	3/4"	1/2"	7.4 lbs.
WS600100	6 42367 02944 9	6"	1"	1"	1/2"	7.4 lbs.
WS600125	6 42367 02946 3	6"	1-1/4"	1"	1/2"	6.8 lbs.
WS600200	6 42367 03010 0	6"	2"	1"	1/2"	6.4 lbs.
WS625125	6 42367 04519 7	6-1/4"	1-1/4"	1"	1/2"	8.7 lbs.
WS625200	6 42367 03015 5	6-1/4"	2"	1"	1/2"	6.6 lbs.
WS800100	6 42367 03019 3	8"	1"	1"	1/2"	14.3 lbs.
WS800125	6 42367 03020 9	8"	1-1/4"	1"	1/2"	14.1 lbs.
WS800200	6 42367 03022 3	8"	2"	1"	1/2"	14.8 lbs.
WS800300	6 42367 03024 7	8"	3"	1"	1/2"	13.1 lbs.
WS800400	6 42367 03025 4	8"	4"	1"	1/2"	11.2 lbs.
WS100300	6 42367 02975 3	10"	3"	3/4"	1/2"	28.6 lbs.
WS100500	6 42367 02977 7	10"	5"	3/4"	1/2"	21.8 lbs.
WS120300	6 42367 02982 1	12"	3"	3/4"	1/2"	43.2 lbs.
WS120400	6 42367 02983 8	12"	4"	3/4"	1/2"	40.5 lbs.
WS120500	6 42367 02984 5	12"	5"	3/4"	1/2"	36.6 lbs.



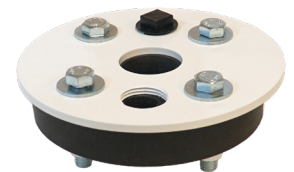
Cast Iron Single Drop Pipe Split Top Plate



WS400125



WS600100



Steel Single Drop Pipe Solid Top Plate



WS450100S WS600150S

Single Drop Pipe - Solid Top Plate

- 3/4" Thick Rubber Packer - Painted Steel - Individually Boxed and Labeled

Order Number	UPC Bar Code (Qty.1)	Well Size I.D.	Drop Pipe	Cable Tapping	Vent Tapping	Approx. Weight
WS450125S	6 42367 45339 8	4-1/2"	1-1/4"	1"	1/2"	4.3 lbs.
WS450100S	6 42367 45340 4	4-1/2"	1"	3/4"	1/2"	4.2 lbs.
WS558200S	6 42367 45364 0	5-5/8"	2"	3/4"	1/2"	3.4 lbs.
WS600150S	6 42367 45341 1	6"	1-1/2"	1"	1/2"	6.8 lbs.
WS625100S	6 42367 45342 8	6-1/4"	1"	1"	1/2"	8.0 lbs.
WS800300S	6 42367 45343 5	8"	3"	1"	1/2"	13.1 lbs.
WS100200S	6 42367 45344 2	10"	2"	3/4"	1/2"	29.6 lbs.
WS100300S	6 42367 45411 1	10"	3"	1-1/4"	3/4"	20.0 lbs.
WS100400S	6 42367 45345 9	10"	4"	3/4"	1/2"	26.0 lbs.

Double Drop Pipe - Split Top Plate

- 3/4" Thick Rubber Packer - Painted Cast Iron - Individually Boxed and Labeled

Order Number	UPC Bar Code (Qty.1)	Well Size I.D.	Drop Pipe	Vent Tapping	Approx. Weight
WS422510	6 42367 02932 6	4"	1-1/4" x 1"	1/2"	2.4 lbs.
WS522510	6 42367 03001 8	5"	1-1/4" x 1"	1/2"	5.3 lbs.
WS622510	6 42367 02953 1	6"	1-1/4" x 1"	1/2"	6.9 lbs.
WS622525	6 42367 03011 7	6"	1-1/4" x 1-1/4"	1/2"	7.9 lbs.
WS625251	6 42367 02960 9	6-1/4"	1-1/4" x 1"	1/2"	7.3 lbs.
WS652525	6 42367 03017 9	6-1/4"	1-1/4" x 1-1/4"	1/2"	6.8 lbs.



Cast Iron Double Drop Pipe Split Top Plate



WS622525 WS625251

Single Drop Pipe - Solid Top Plate

- Molded from Hi Impact ABS for extra strength and endurance - Extra Thick Rubber Packer
- Individually Boxed and Labeled

Order Number	UPC Bar Code (Qty.1)	Well Size I.D.	Drop Pipe	Cable Tapping	Vent Tapping	Approx. Weight
WS200100P	6 42367 07111 0	2"	1"	---	---	0.3 lbs.
WS300100P	6 42367 07207 0	3"	1"	3/8"	1/4"	1.0 lbs.
WS400100P	6 42367 03879 3	4"	1"	3/4"	1/2"	1.5 lbs.
WS400125P	6 42367 02985 2	4"	1-1/4"	3/4"	1/2"	1.5 lbs.
WS400200P	6 42367 07605 4	4"	2"	3/4"	1/2"	1.8 lbs.
WS450100P	6 42367 05345 1	4-1/2"	1"	3/4"	1/2"	1.8 lbs.
WS500100P	6 42367 02995 1	5"	1"	3/4"	1/2"	2.0 lbs.
WS500125P	6 42367 02997 5	5"	1-1/4"	3/4"	1/2"	2.0 lbs.
WS500150P	6 42367 02999 9	5"	1-1/2"	3/4"	1/2"	2.0 lbs.
WS500200P	6 42367 05714 5	5"	2"	1"	1/2"	2.0 lbs.
WS600000P	6 42367 05955 2	6"	Blank	3/4"	1/2"	3.0 lbs.
WS600100P	6 42367 03006 3	6"	1"	3/4"	1/2"	3.0 lbs.
WS600125P	6 42367 03007 0	6"	1-1/4"	3/4"	1/2"	3.0 lbs.
WS600150P	6 42367 03009 4	6"	1-1/2"	1"	1/2"	3.0 lbs.
WS600200P	6 42367 05715 2	6"	2"	3/4"	1/2"	2.2 lbs.
WS625100P	6 42367 03012 4	6-1/4"	1"	1"	1/2"	3.3 lbs.
WS625125P	6 42367 10861 8	6-1/4"	1-1/4"	1"	1/2"	3.3 lbs.
WS800000P	6 42367 09554 3	8"	Blank	1"	----	5.0 lbs.
WS800100P	6 42367 07066 3	8"	1"	1"	1/2"	5.0 lbs.
WS800200P	6 42367 09290 0	8"	2"	1"	1/2"	5.0 lbs.
WS800300P	6 42367 07219 3	8"	3"	1"	1/2"	5.0 lbs.

NOTE: Not for use with SDR17 casing



No-Lead



WS400125P

Double Drop Pipe - Solid Top Plate

- Molded from Hi Impact ABS for extra strength and endurance - Extra Thick Rubber Packer
- Individually Boxed and Labeled

Order Number	UPC Bar Code (Qty.1)	Well Size I.D.	Drop Pipe	Vent Tapping	Approx. Weight
WS422510P	6 42367 09884 1	4"	1-1/4" x 1"	1/2"	1.5 lbs.
WS450251P	6 42367 07846 1	4-1/2"	1-1/4" x 1"	1/2"	1.8 lbs.
WS522510P	6 42367 09353 2	5"	1-1/4" x 1"	1/2"	2.0 lbs.
WS622510P	6 42367 08843 9	6"	1-1/4" x 1"	1/2"	3.3 lbs.
WS625251P	6 42367 11389 6	6-1/4"	1-1/4" x 1"	1/2"	3.3 lbs.

NOTE: Not for use with SDR17 casing



WS422510P

Well Seal Vent

Order Number	UPC Bar Code (Qty.1)	Size	Approx. Weight
WSV50	6 42367 04303 2	1/2" x 3-3/4"	0.06 lbs.



WSV50

WARNING: This product meets Federal USA Drinking Water requirements but has not been specifically tested or approved as no-lead in the State of California.





© 2024 Merrill Manufacturing Form No. 2086.17
315 Flindt Dr. | Storm Lake, Iowa 50588 | (800) 831-6962 | merrillmfg.com